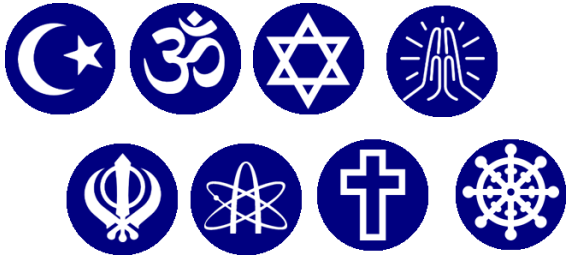
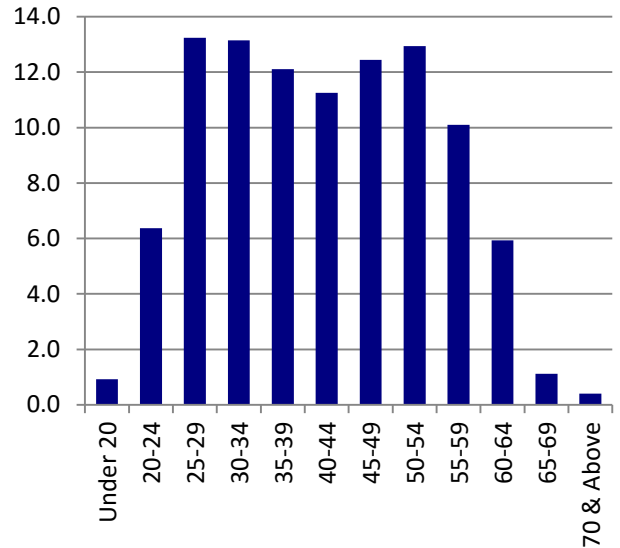


Religion & Belief



5396 (75.7%) identify their beliefs as Christian, Atheist, Buddhist, Hindu, Muslim, Jewish, Sikh or other.

Staff Age Profile



Disabilities

259 (3.6%) staff have declared a disability.



Race & Ethnicity

764 (10.7%) staff from BME Background.

Staff Diversity in UHP 2017



Acceptance Without Exception

136 (1.9%) staff from LGBT communities.

107 (26%) of Consultants are from BME Background.



The Gender Balance

Women represent 25% of the Trust board including our non-Executive directors.

Celebrating Our Success

Since 2010 Project SEARCH has supported 69 interns across 60 departments within the Trust.

78% gained competitive paid employment with 28 working at Derriford Hospital

